

ANOTHER ANTHOCARIS LANCEOLATA X

A. SARA HYBRID

OAKLEY SHIELDS

Department of Entomology, University of California, Davis, 95616

and

JAMES R. MORI

3101 Mason Way, Modesto, California 95350

ON APRIL 12, 1970, we captured what we believe is a hybrid between *Anthocaris lanceolata lanceolata* Lucas and *A. sara* f. *reakirtii* Edwards. The locality was a steep, rocky, exposed S.-facing slope above Skelton Creek, 2800-3000', along California riding trail 19E04.2, 1.1 air mi. due E. of Comet Mine, Sect. 23 & 24, T. 4 S., R. 19 E., E. of Jerseydale, ca. 10 air mi. NE of Mariposa, Mariposa Co., Calif. The canyon has extensive slate outcroppings with *Pinus sabiniana* Dougl.—*Quercus chrysolepis* Liebm.—*Aesculus californica* (Spach) Nutt. in association.

The specimen is a male in slightly worn wing condition taken late in the day near the bottom of the canyon along the horse trail. Both *sara reakirtii* and *lanceolata* were fairly abundant along the slope and creek bottom. Other pierids on wing at the time were *Pieris sisymbrii* Boisduval and *Euchloe hyantis* Edwards. *Pieris napi* f. *venosa* Scudder was also taken about 1½ mi. W. in a Ponderosa Pine forest.

The Skelton Creek specimen approaches *lanceolata* most strikingly in having a gray, densely mottled ventral surface and a somewhat similar mottling pattern, as well as a slightly pointed forewing apex. It also resembles *lanceolata* more than *sara reakirtii* in nearly lacking any black scales on the outer margin of the hindwing dorsal surface, which form bold-checkering in *sara reakirtii* at this locality. It resembles *sara reakirtii* in size, extensive black scaling at base of forewings, and the presence of the orange tips on the primaries, but the color of the "orange" is light, almost yellowish, rather than red-orange.

Comstock (1929) described a supposed male *A. lanceolata australis* (Grinnell) X *A. sara reakirtii* hybrid from Whitewater Canyon, Riverside Co., Calif., taken March 8, 1929 (leg. C. M. Dammers, LACM), as "dammersi". Our specimen compares fairly closely with his description and figure and with the color figure in Howe (1975), although it is not identical. Marked variation among hybrid butterflies is well-known. Three known *sara* aberrants (Comstock, 1927; Dornfeld, 1970) show no likeness to our specimen.

The specimen resides in the senior author's collection.

BIBLIOGRAPHY

- COMSTOCK, J. A., 1927. *Butterflies of California*. Publ. by the author, Los Angeles, 334 p.
- , 1929. A new species or form of *Anthocharis* from California. *Bull. So. Calif. Acad. Sci.* 28: 32-33.
- DORNFELD, E. J., 1970. A field-captured scale-deficient mutant of *Anthocharis sara*. *J. Res. Lepid.* 9: 25-28.
- HOWE, W. H., ed., 1975. *The Butterflies of North America*. Doubleday & Co.; Garden City, N.Y., 633 p. (see fig. 8, pl. 71).

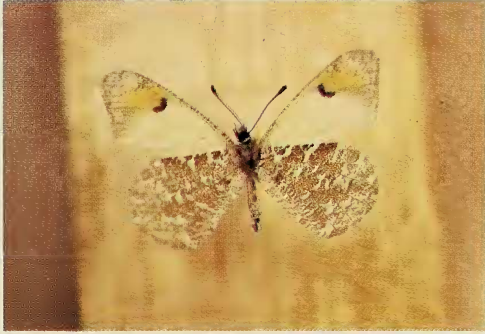


Fig. 1—*Anthocaris lanceolata* X *A. sara reakirtii* hybrid from Skelton Creek, dorsal surface.